

# Supplementary material



Figure 1: Image segmentation examples from Stanford background dataset for pairwise non-linear model.



Figure 2: Test image segmentation examples from HorseSeg dataset for pairwise non-linear model trained on images with manual annotation or object bounding box (green color means foreground, red — background).

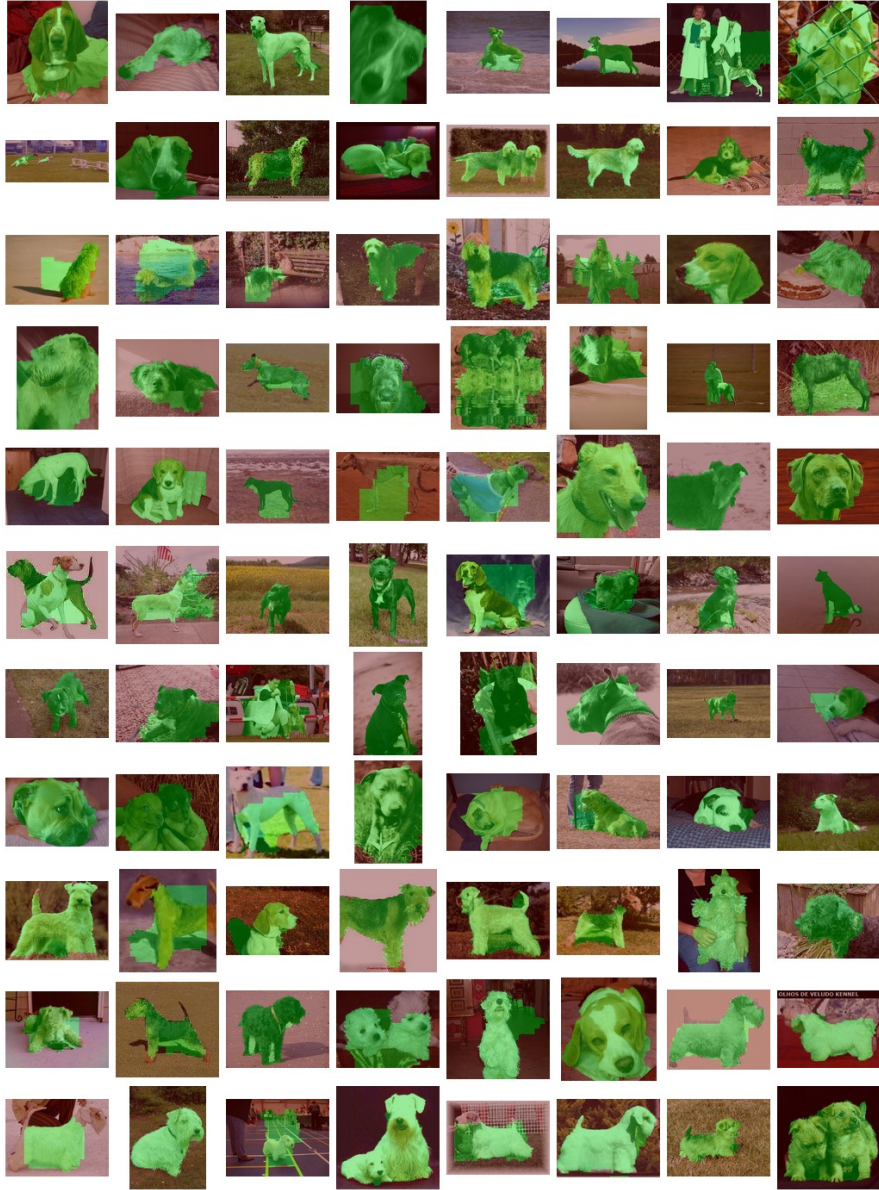


Figure 3: Test image segmentation examples from DogSeg dataset for pairwise non-linear model trained on images with manual annotation or object bounding box (green color means foreground, red — background).

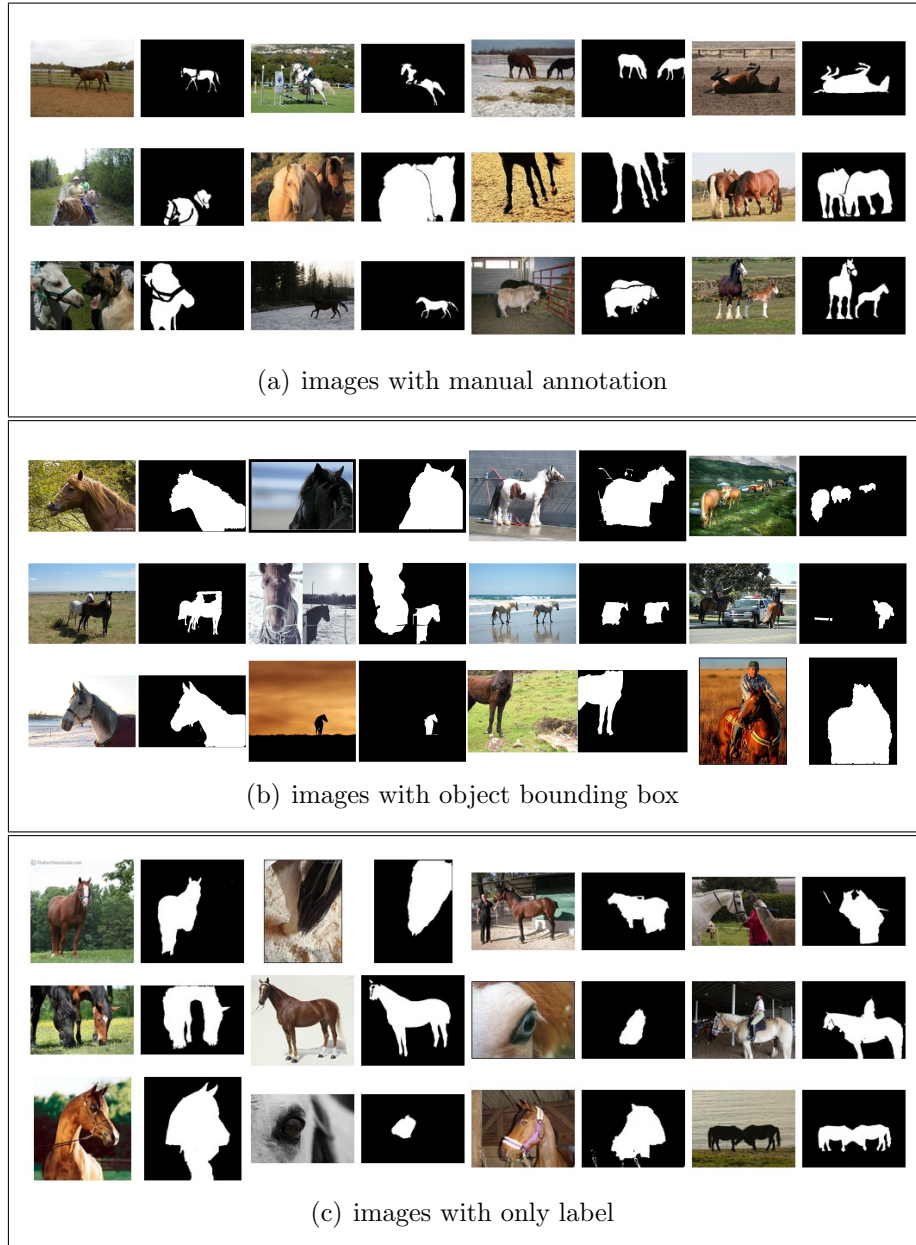


Figure 4: HorseSeg training image examples.



Figure 5: DogSeg training image examples.