

Templateless Quasi-Rigid Shape Modeling with Implicit Loop-Closure Supplementary Material

Ming Zeng Jiaxiang Zheng Xuan Cheng Xinguo Liu
State Key Lab of CAD&CG, Zhejiang University

In the paper, we have shown some human modeling results produced by our proposed method. In this supplementary material, we append more human modeling results. To display whole shapes of the results, we show all subjects in four different views in the following figures.



Figure 1. Subject 1.



Figure 2. Subject 2.



Figure 3. Subject 3.

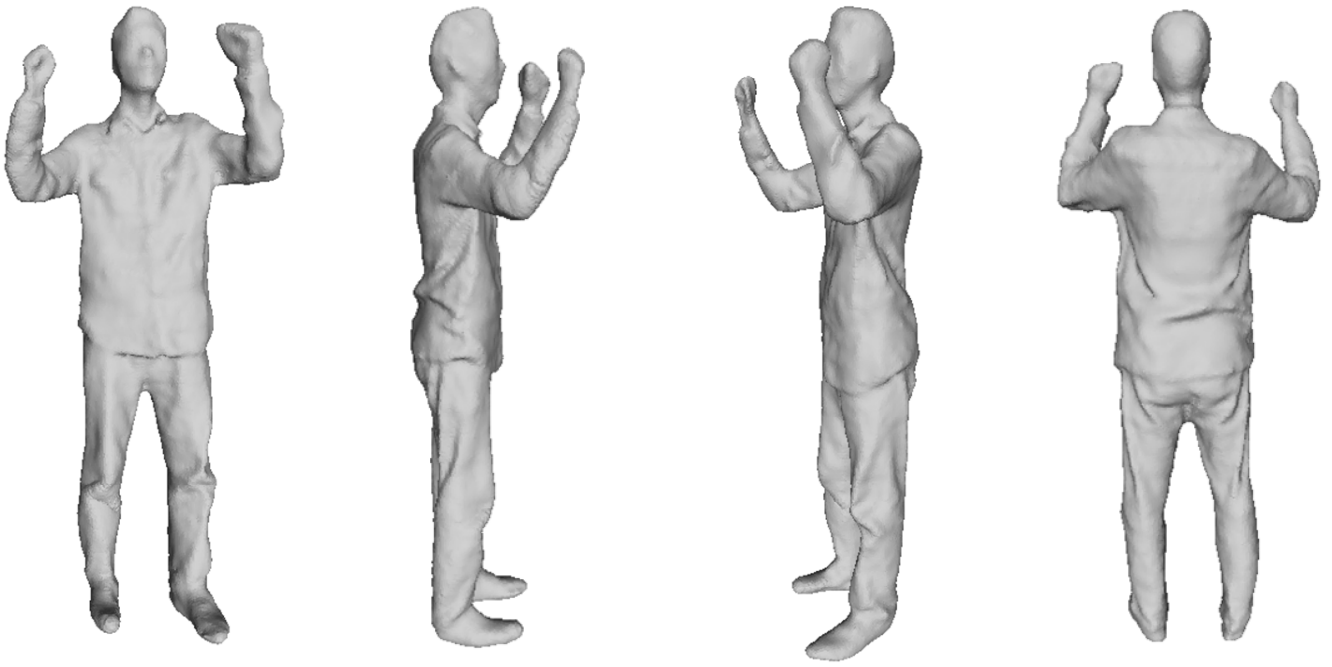


Figure 4. Subject 4.



Figure 5. Subject 5.



Figure 6. Subject 6.