

Visual Tracking via Locality Sensitive Histograms

Shengfeng He[†] Qingxiong Yang^{†*} Rynson W.H. Lau[†] Jiang Wang[†] Ming-Hsuan Yang[§]

[†]Department of Computer Science
City University of Hong Kong

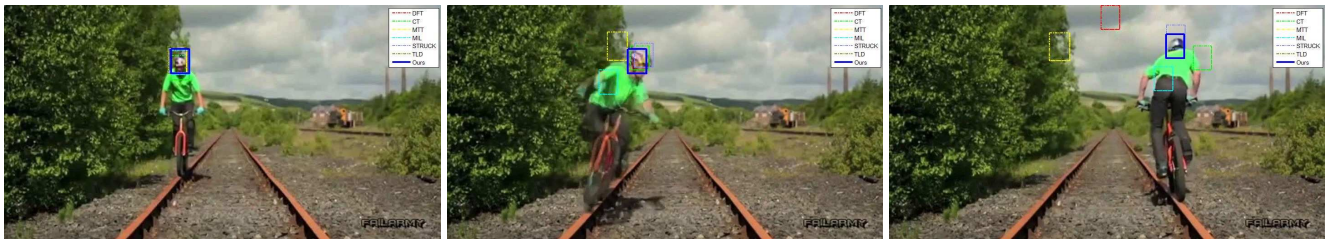
[§]Electrical Engineering and Computer Science
University of California at Merced

shengfeng_he@yahoo.com, {qiyang, rynson.lau, jiangwang6}@cityu.edu.hk, mhyang@ucmerced.edu

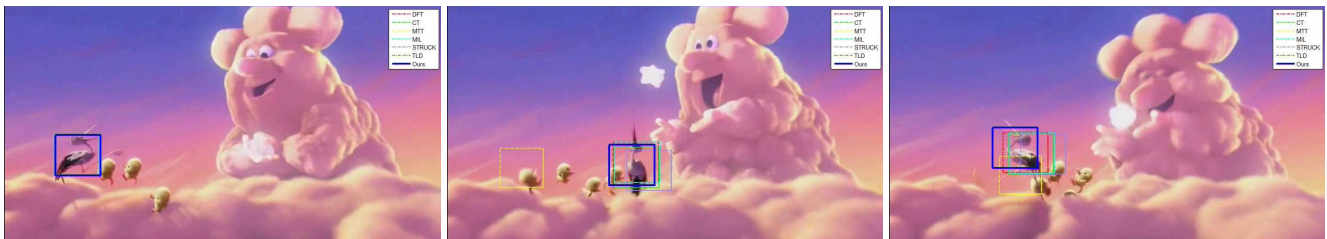
We present screenshots of all 20 video sequences that we use, with greater resolution. These 20 video sequences are available at our project website: <http://www.cs.cityu.edu.hk/~shengfhe2/visual-tracking-via-locality-sensitive-histograms.html>.



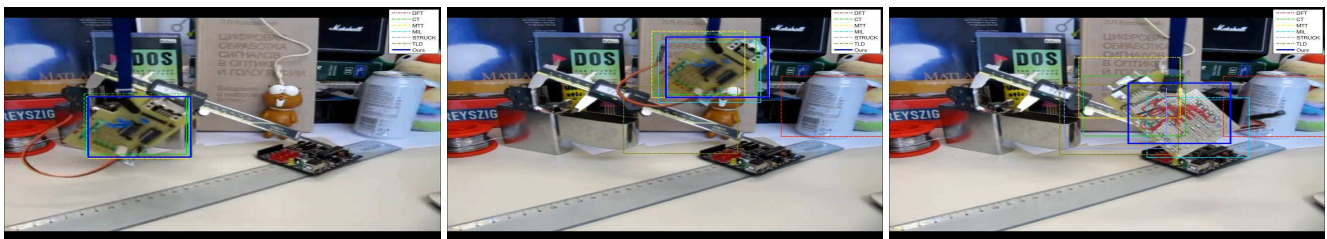
(a) Basketball



(b) Biker



(c) Bird



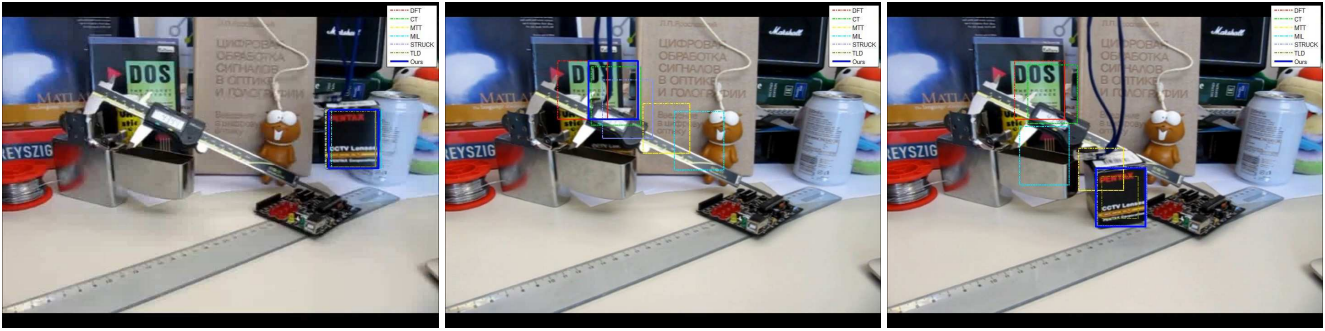
(d) Board

Figure 1: Screenshots of the visual tracking results. Red, green, yellow, azure, purple, olive and blue rectangles correspond to results from **DFT**, **CT**, **MTT**, **MIL**, **Struck**, **TLD** and **ours**, respectively.

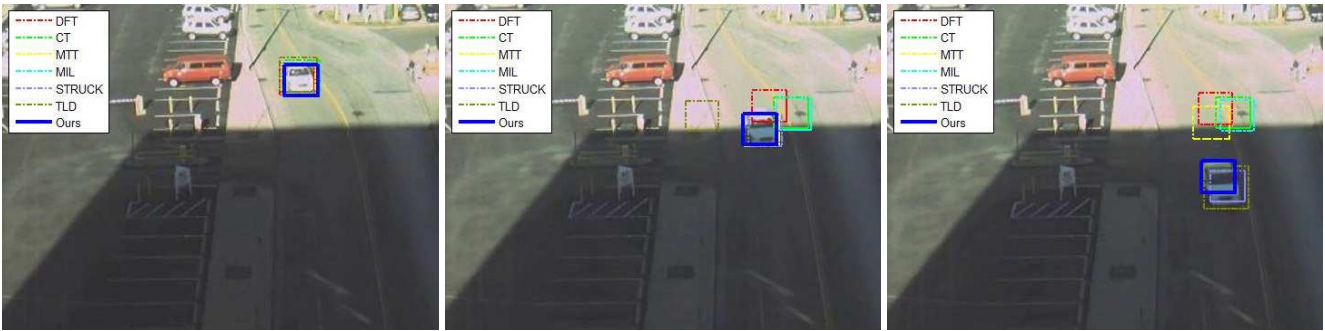
*Correspondence author



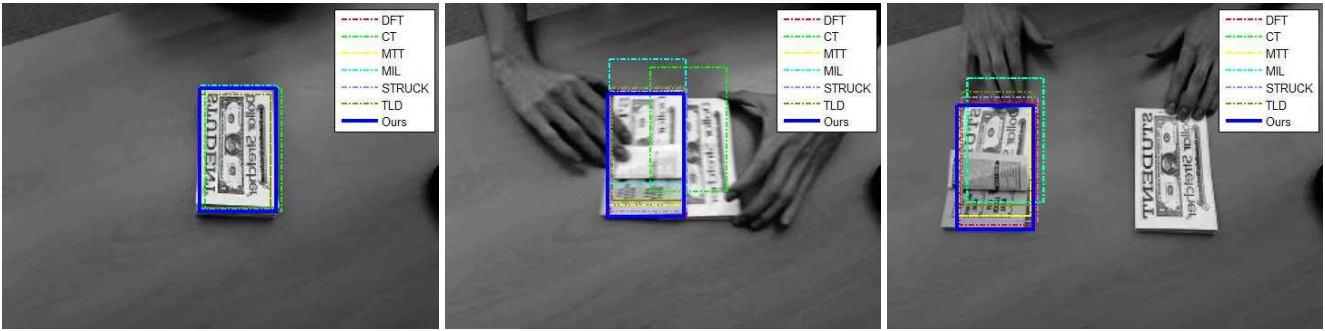
(a) Bolt



(b) Box



(c) Car

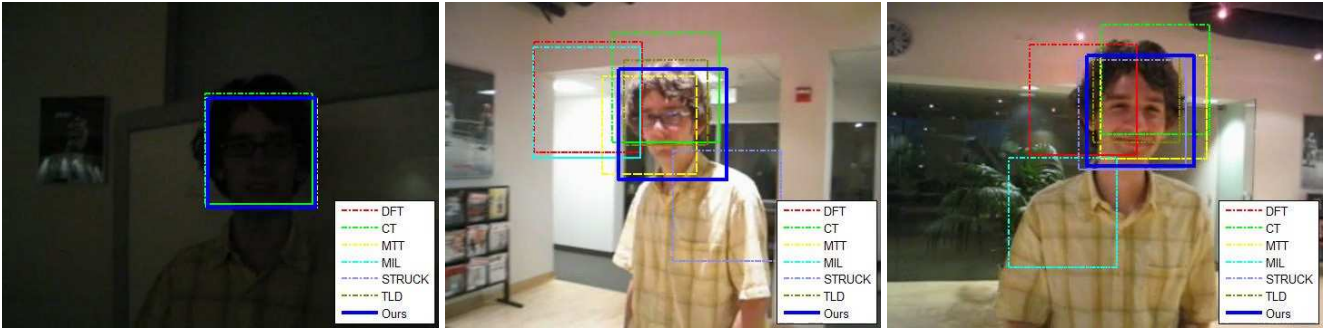


(d) Coupon

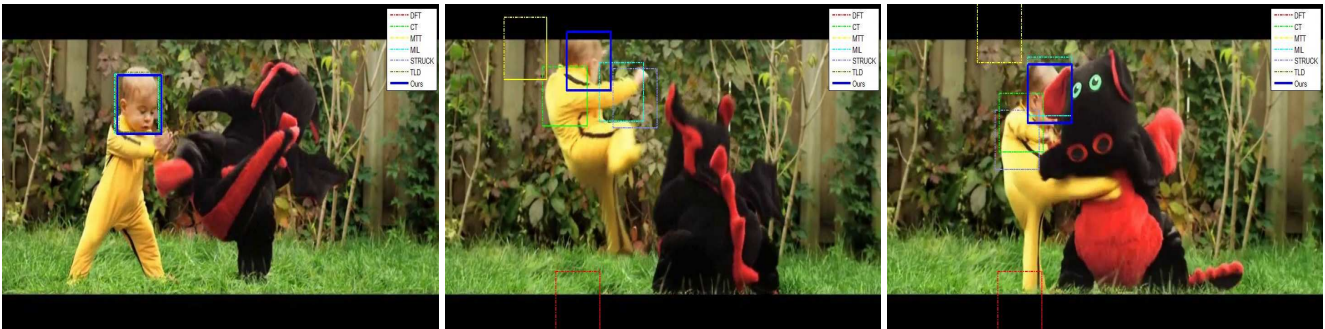
Figure 2: Screenshots of the visual tracking results. Red, green, yellow, azure, purple, olive and blue rectangles correspond to results from **DFT**, **CT**, **MTT**, **MIL**, **Struck**, **TLD** and **ours**, respectively.



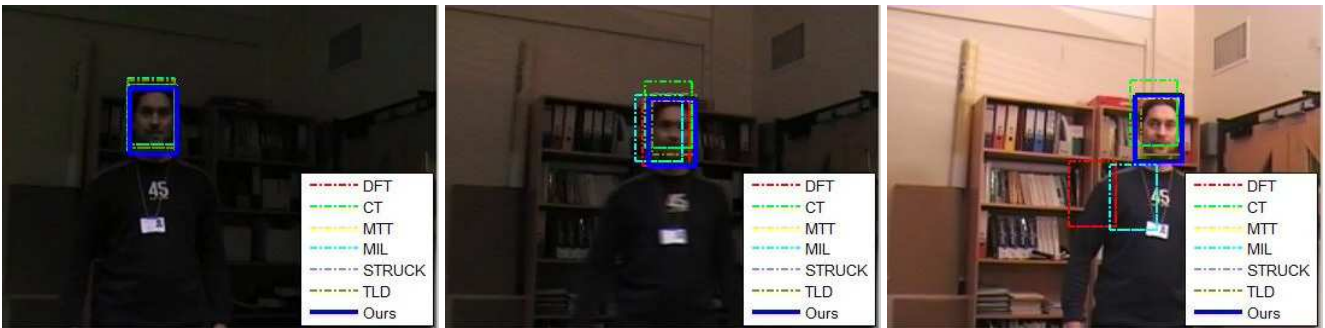
(a) Crowds



(b) David indoor

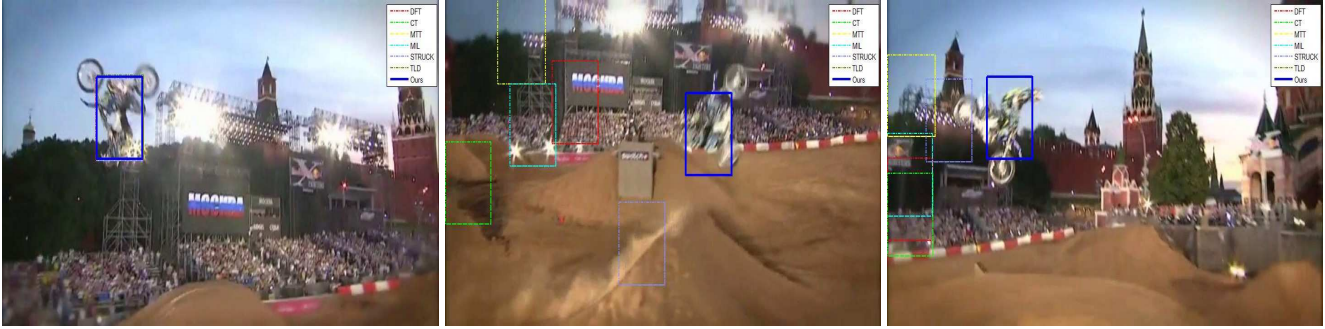


(c) Dragon baby



(d) Man

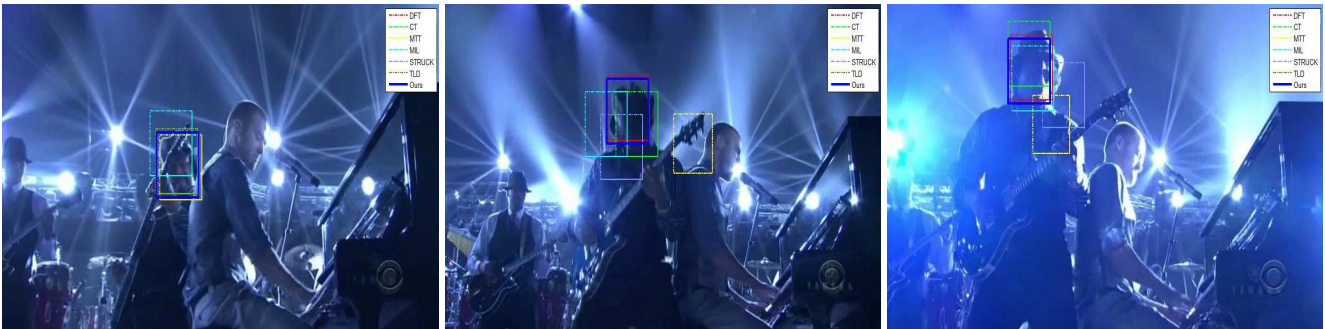
Figure 3: Screenshots of the visual tracking results. Red, green, yellow, azure, purple, olive and blue rectangles correspond to results from **DFT**, **CT**, **MTT**, **MIL**, **Struck**, **TLD** and **ours**, respectively.



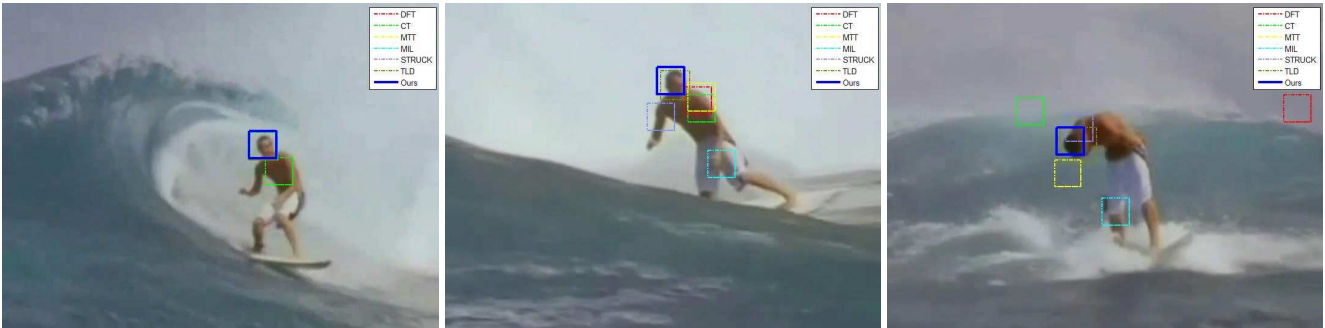
(a) Motor rolling



(b) Occluded face2



(c) Shaking

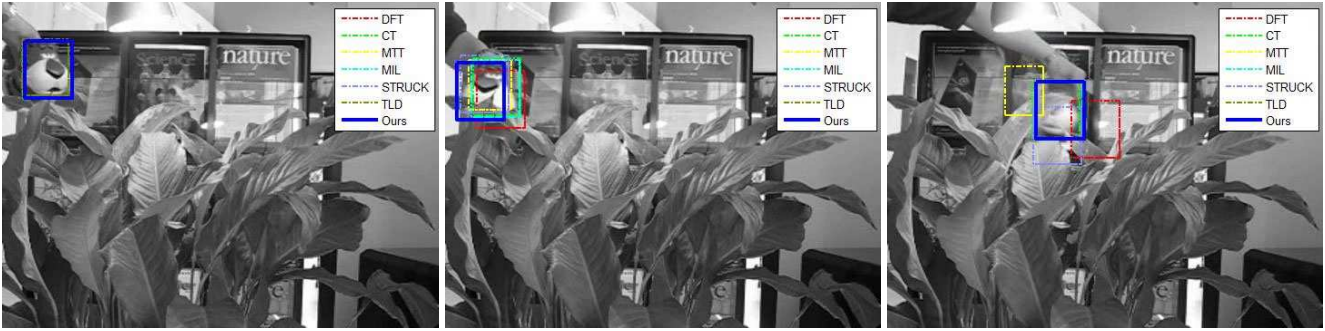


(d) Surfer

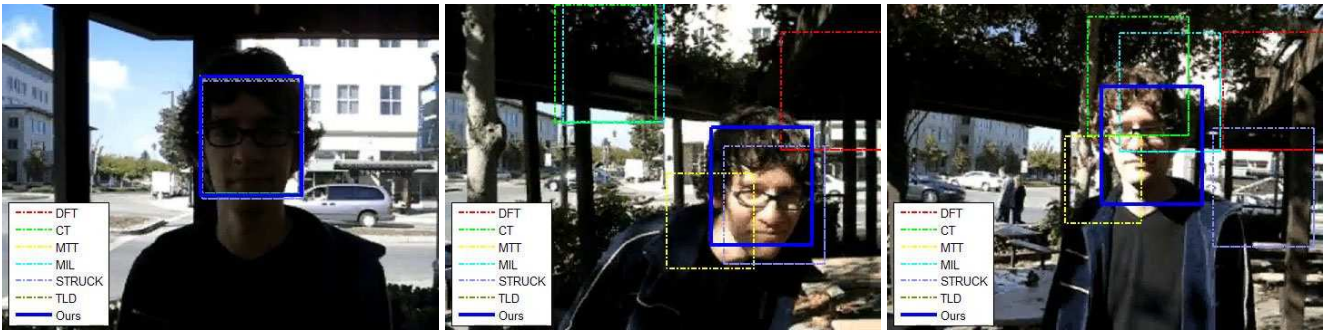
Figure 4: Screenshots of the visual tracking results. Red, green, yellow, azure, purple, olive and blue rectangles correspond to results from **DFT**, **CT**, **MTT**, **MIL**, **Struck**, **TLD** and **ours**, respectively.



(a) Sylvester



(b) Tiger2



(c) Trellis



(d) Woman

Figure 5: Screenshots of the visual tracking results. Red, green, yellow, azure, purple, olive and blue rectangles correspond to results from **DFT**, **CT**, **MTT**, **MIL**, **Struck**, **TLD** and **ours**, respectively.

We also generate the center location error plots of all 20 video sequences in high resolution images.

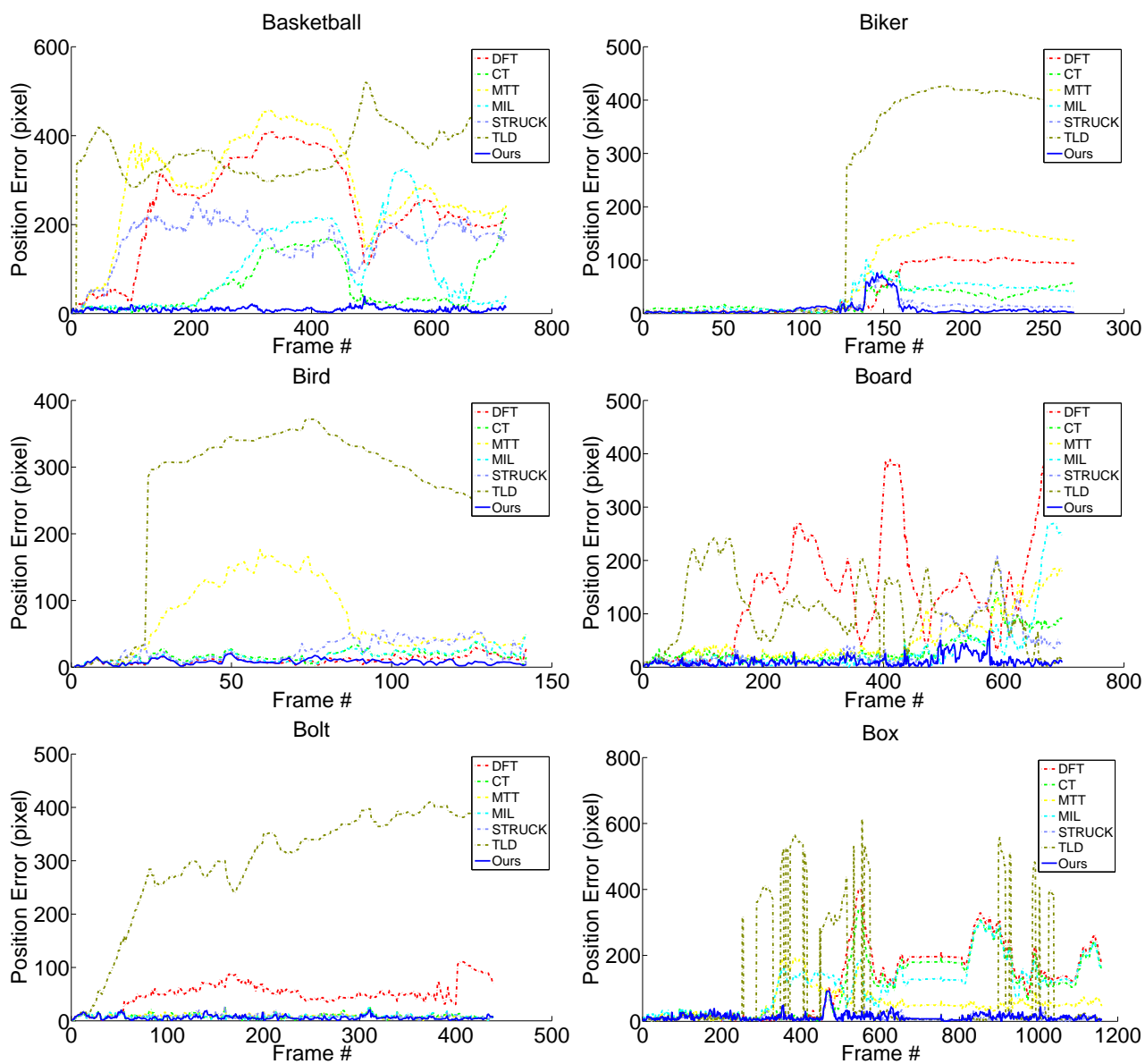


Figure 6: Center location error plots of different trackers.

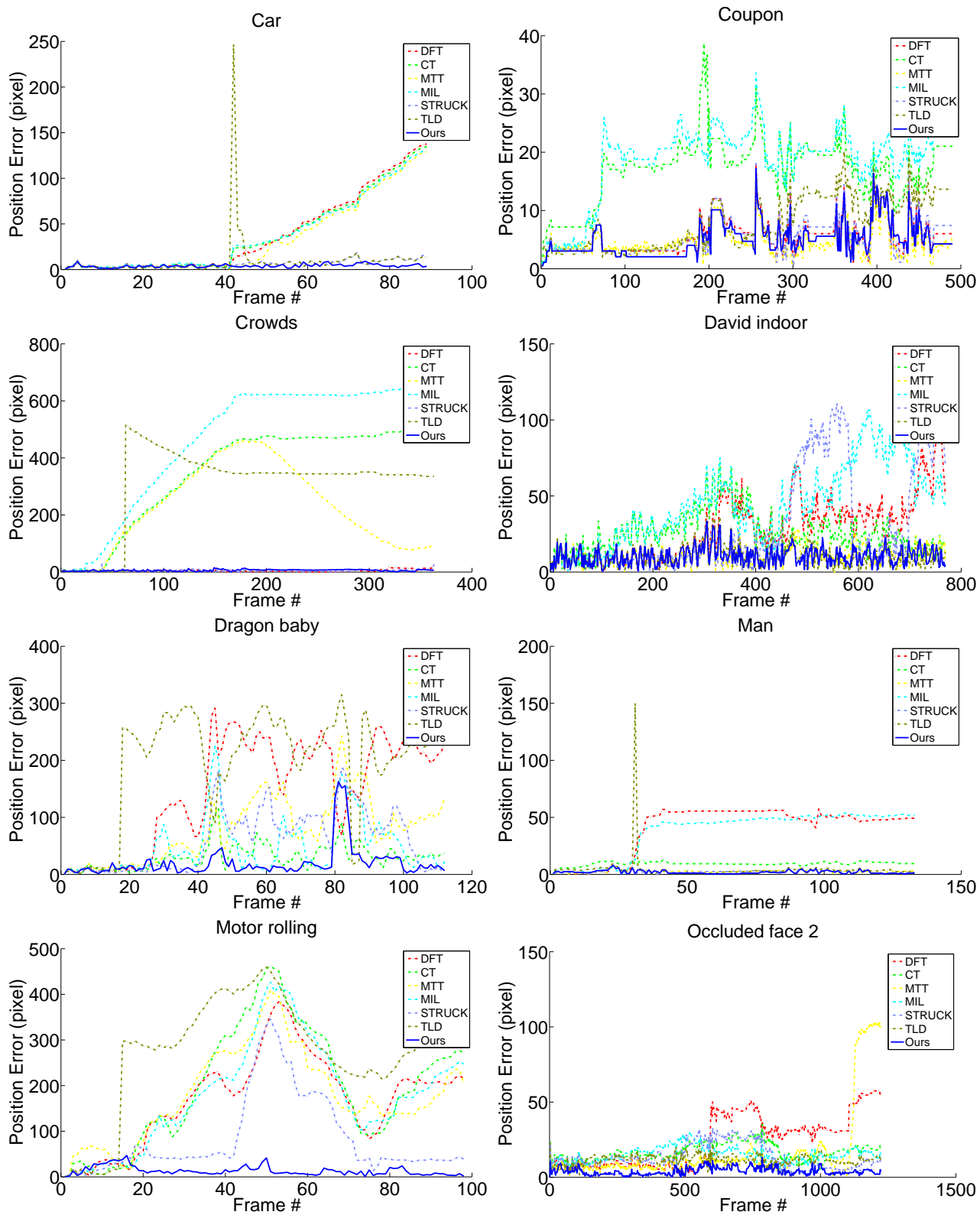


Figure 7: Center location error plots of different trackers.

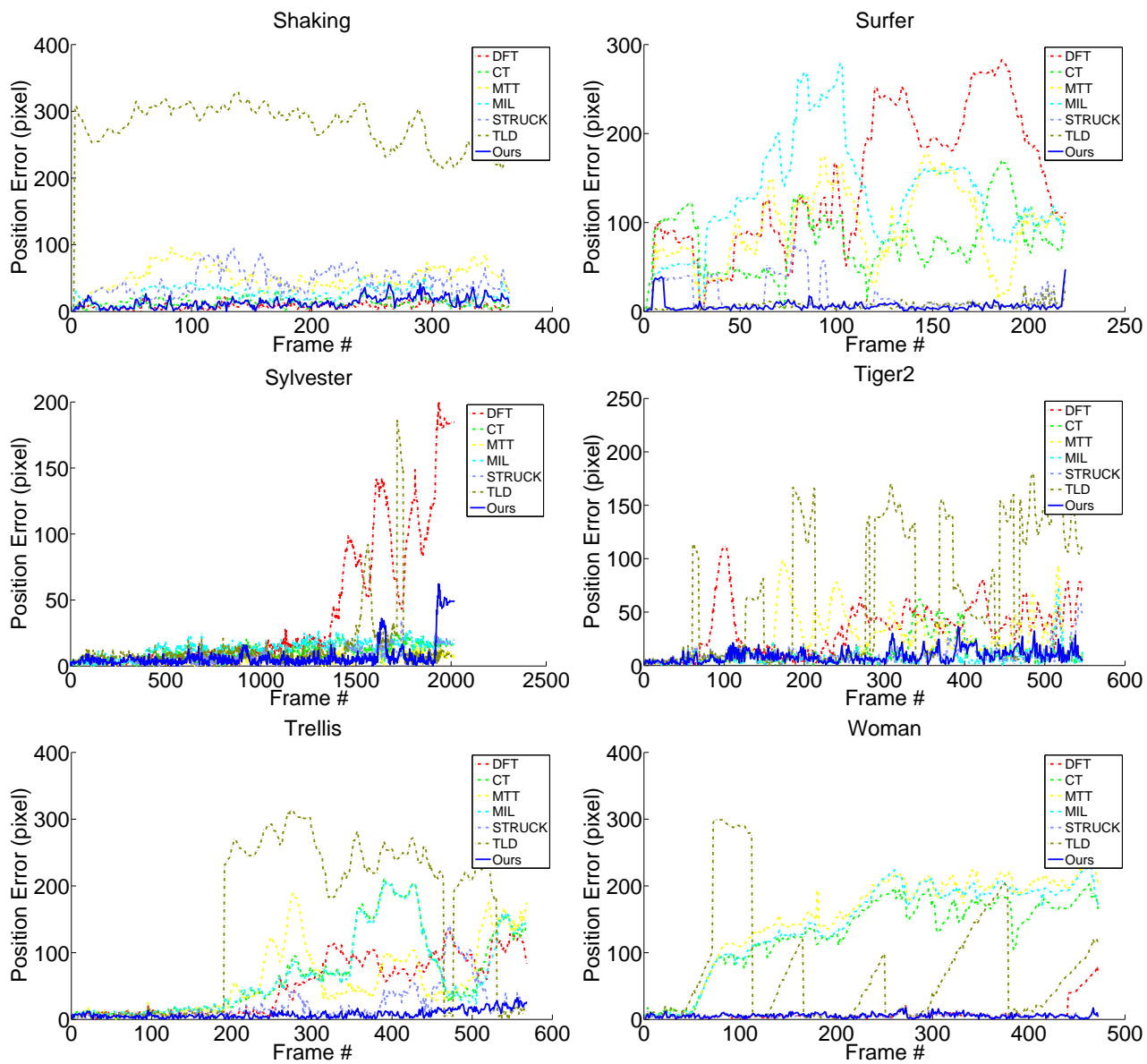


Figure 8: Center location error plots of different trackers.