

Supplementary Material

Detection and Matching of Rectilinear Structures

Branislav Mičušík¹ Horst Wildenauer² Jana Košecká¹
¹George Mason University, USA ²Vienna University of Technology, Austria



Figure 1. Rectangle detection results. The following explanation applies to all figures in this document. First row: Original image and complete rectangles detected in the dominant orthogonal planes. Second to last row: Closed incomplete rectangles (left column) and closed U-shapes (right column).

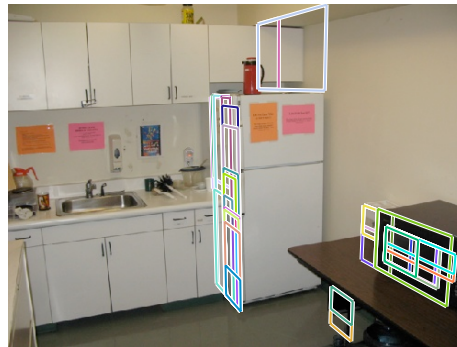
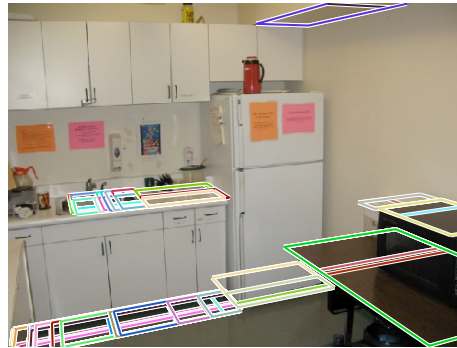
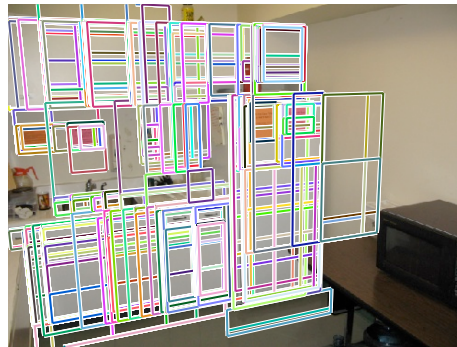
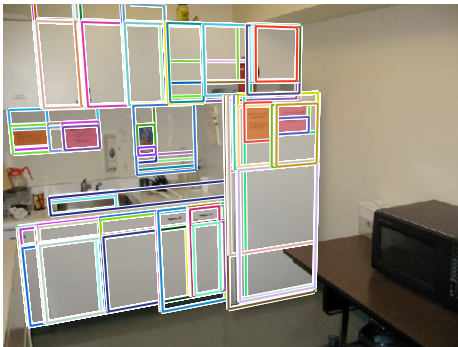
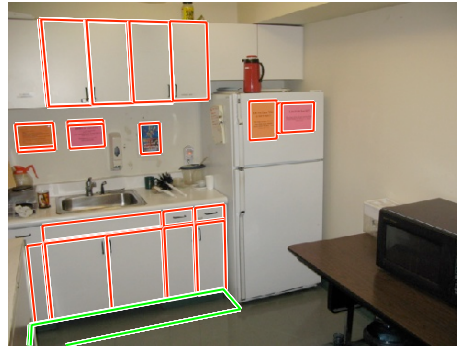


Figure 2. Rectangle detection results.

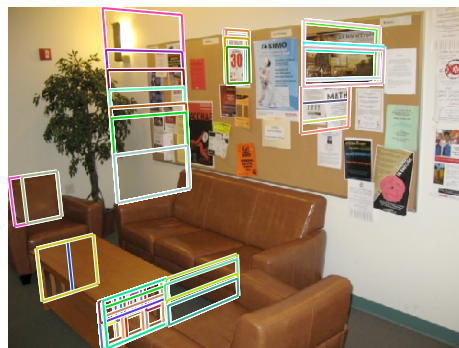
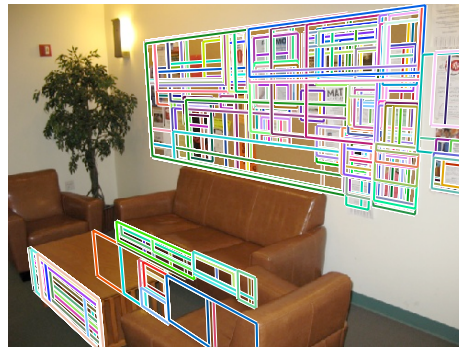
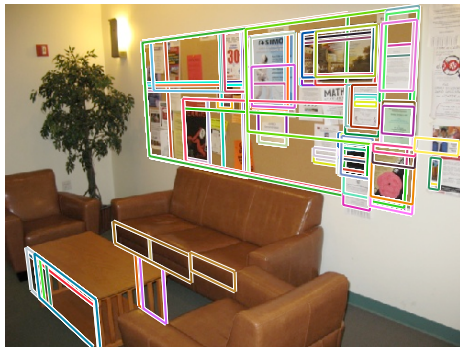
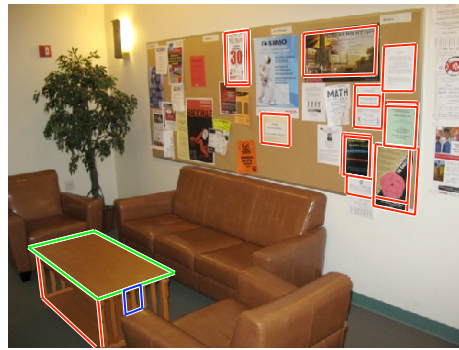


Figure 3. Rectangle detection results.



Figure 4. Rectangle detection results.

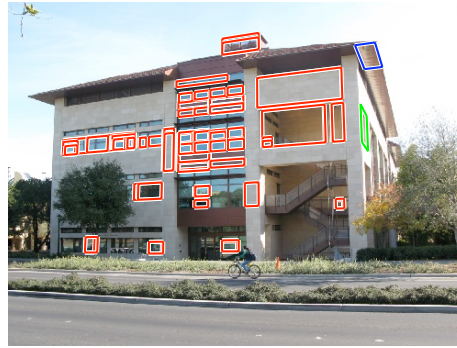


Figure 5. Rectangle detection results.

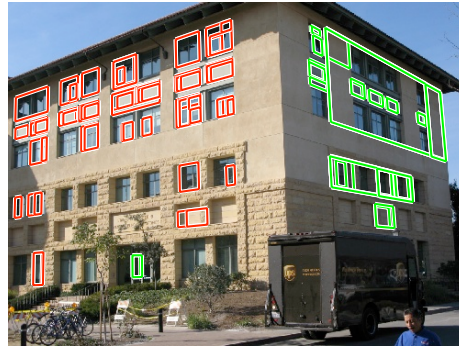


Figure 6. Rectangle detection results.

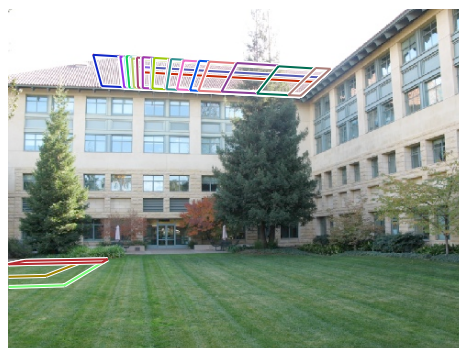
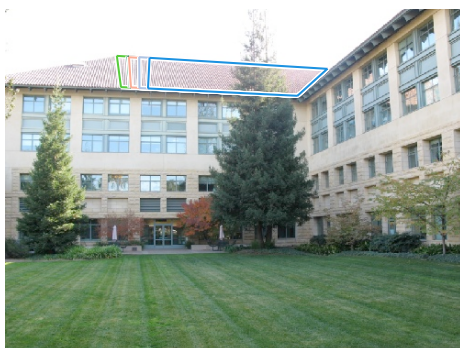
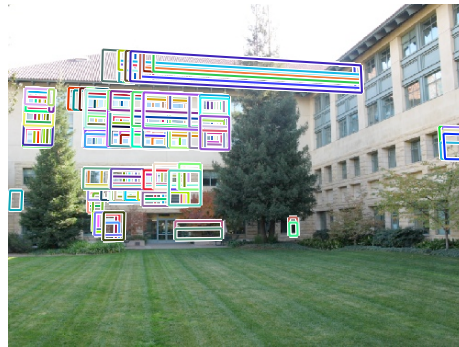
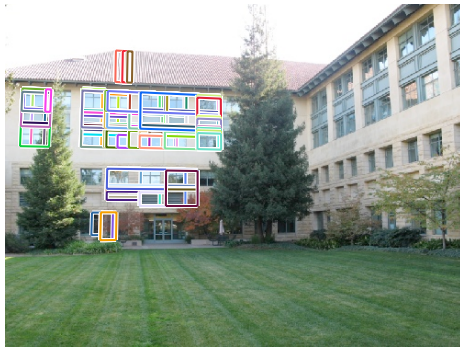


Figure 7. Rectangle detection results.

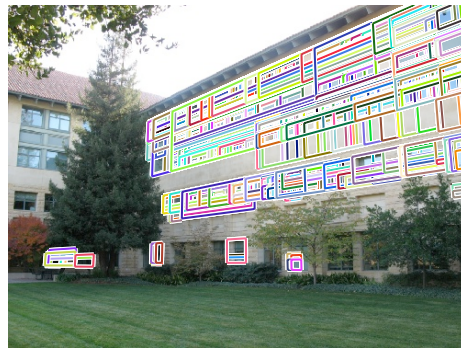
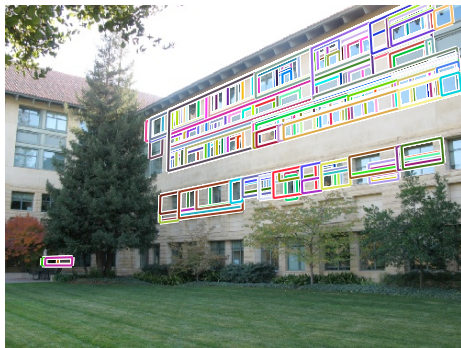
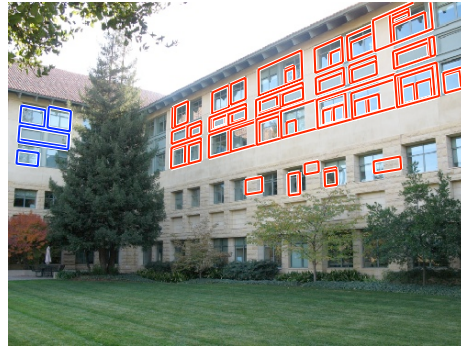


Figure 8. Rectangle detection results.



Figure 9. Rectangle detection results.

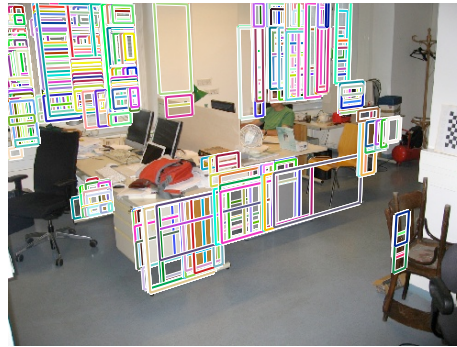
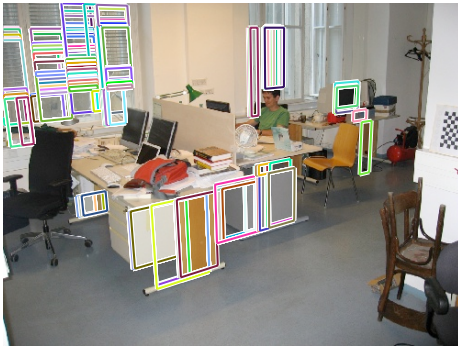
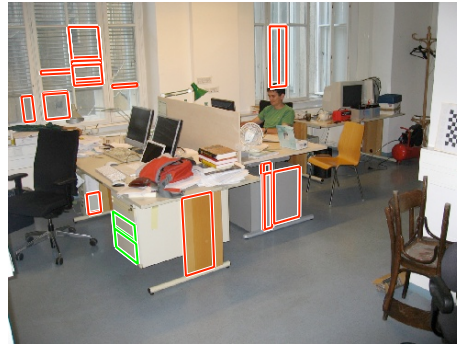


Figure 10. Rectangle detection results.

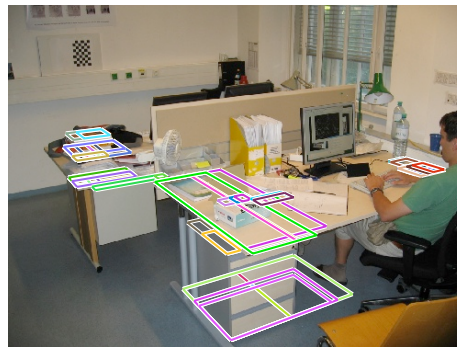
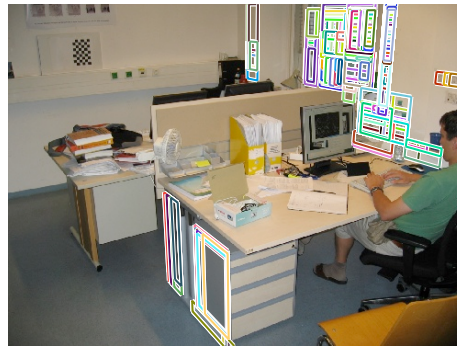
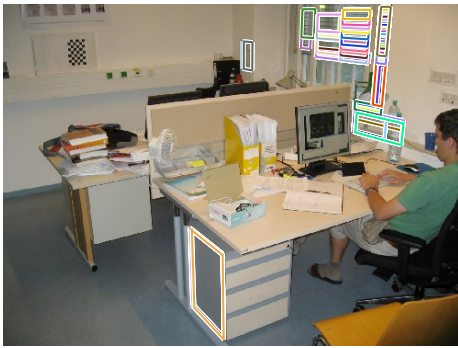
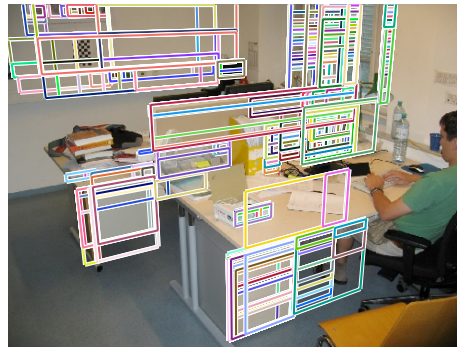
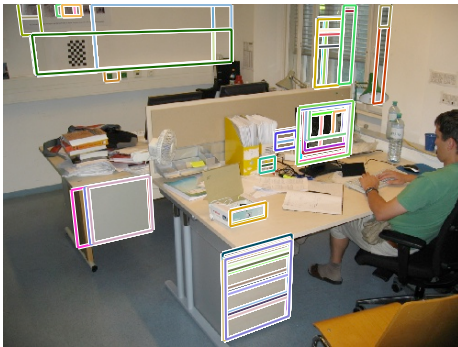
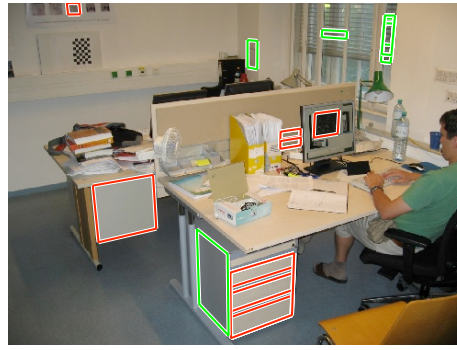


Figure 11. Rectangle detection results.

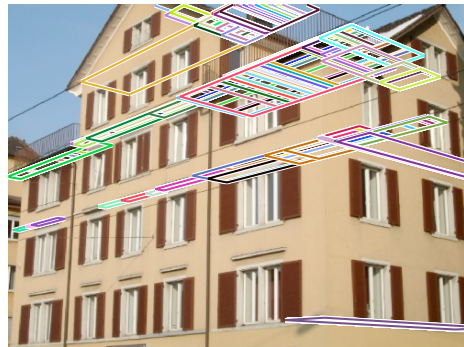
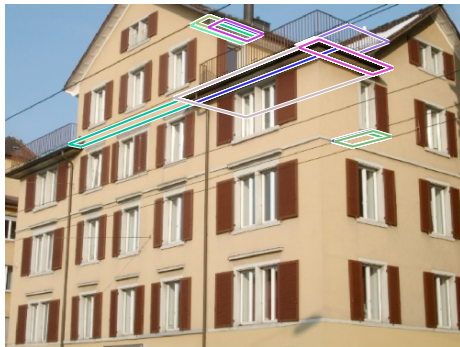
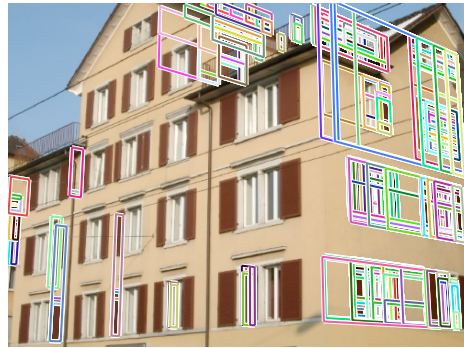
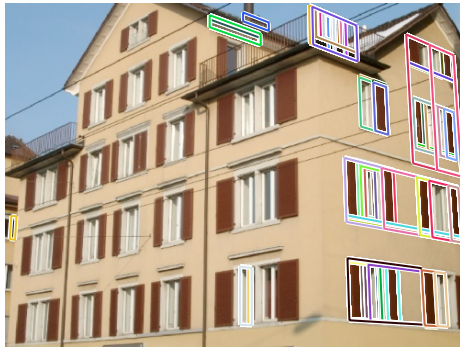
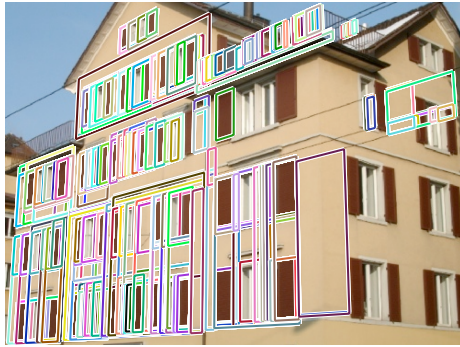
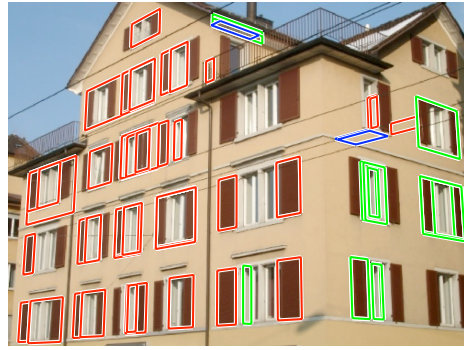


Figure 12. Rectangle detection results.