

Mechanism and Control of a 4WD Robotic Platform for Omnidirectional Wheelchairs

Masayoshi Wada, *Member, IEEE*

Abstract—This paper presents mechanism and control of a Four-Wheel-Drive (4WD) robotic platform for wheelchairs. The 4WD mechanism equips four wheels, two omni-wheels in front and two normal tires in rear. The normal wheel and the omni-wheel, mounted on the same side of the base, are interconnected by a synchro-drive transmission to rotate in unison with a drive motor. To control chair orientation on the 4WD platform, the third motor is installed on the platform. The chair with the proposed omnidirectional 4WD system is capable of moving in any direction which is so-called holonomic and omnidirectional mobility.

The holonomic omnidirectional mobile capability enables a person to drive a mobile system with no knowledge about the drive mechanism or its configuration since it can move in any direction and rotate from any configuration of the mechanism.

This paper presents the mechanism and control of 4WD platform to which powered-caster omnidirectional control is applied. The rotations of two pairs of wheel and vertical axis of a chair are controlled in such a way that it performs as a powered twin-caster to realize holonomic motions. The prototype wheelchair is designed and built to verify the mechanism design and control method. The smooth and flexible omnidirectional motions are presented by the experiments.

I. INTRODUCTION

THE mobile systems realizing holonomic omnidirectional motion is one of the important research area in mobile robots. It provide flexibility and high maneuverability to motion planners or human drivers. In some practical applications, accurate positioning or certain traction forces on irregular terrains are required for mobile mechanisms. On the other hand, the holonomic and omnidirectional mobile capability is also very convenient for human drivers since they do not have to understand drive mechanisms and its configuration at all. A human only commands the direction and velocity of motion he/her wants to perform since a holonomic and omnidirectional mechanism can start to move in any direction with any configuration of the mechanism such as directions of wheels. This characteristics is vary suitable for wheelchairs and personal mobiles which is used for daily life for maneuvering crowded area at home.

In this paper, a new type of omnidirectional system is

Manuscript received March 1, 2009. This project was supported by the Industrial Technology Research Grant Program in 2006 from the New Energy and Industrial Technology Development Organization (NEDO), Japan, research ID 05A06715a.

Masayoshi Wada is with the Department of Human-Robotics, Saitama Institute of Technology, Fukaya, Saitama 369-0293 JAPAN (phone: +81-48-585-6884; fax: +81-48-585-6884; e-mail: mwada@ieee.org).

proposed. Design of 4WD platform and its omnidirectional control, powered-caster control, is presented. The experiment using prototype wheelchair verifies the proposed omnidirectional system.

II. CONVENTIONAL MOBILE MECHANISMS FOR WHEELCHAIRS

Standard wheelchairs cannot move sideways. It needs a complex series of movements resembling parallel automobile parking when a wheelchair user wants to move sideways.

Omnidirectional drives used on electric wheelchairs were developed to enhance standard wheelchair maneuverability by enabling them to move sideways without changing the chair orientation. In Fig. 1, an omnidirectional wheelchair with Mechanum wheels [1] uses barrel-shaped rollers on the large wheel's rim inclining the direction of passive rolling 45 degrees from the main wheel shaft and enabling the wheel to slide in the direction of rolling. The standard four-Mechanum-wheel configuration assumes a car-like layout. The inclination of rollers on the Mechanum wheel causes the contact point to vary relative to the main wheel, resulting in energy loss due to conflicts in motion among the four wheels. Because four-point contact is essential, a suspension mechanism is definitely needed to ensure 3-degrees-of-freedom (3DOF) movement. Fig.2 shows an omnidirectional wheelchair with a ball wheel mechanism developed at MIT [2]. Each ball wheel is driven by an individual motor which provides active traction force in a specific direction while perpendicular to the active direction. With this drive system, the point of contact of a wheel is stable relative to the wheelchair body and smooth motion is realized.



Fig. 1 Omnidirectional wheelchair, Fujian [1]



Fig. 2 Ball wheel omnidirectional wheelchair, MIT [2]

The other omnidirectional mechanism is VUTON crawler[3] which consists of many cylindrical free rollers. Since VUTON mechanism allows the multiple rollers to touch the ground simultaneously, heavy load can be applied on the platform.

All of the above omnidirectional systems need one motor to drive one wheel mechanism therefore four motors are needed to drive a four-wheeled wheelchair, while a wheelchair has three degrees of freedoms (DOF) on the floor. Therefore, it involves 1 DOF redundancy in actuation which causes conflicts in motion among the four wheels.

III. POWERED-CASTER OMNIDIRECTIONAL CONTROL

We apply powered-caster control to 4WD mechanism to give an omnidirectional mobile capability to a wheelchair. In this section, The powered-caster omnidirectional control for the original single type configuration[4] is mentioned.

A. Powered-caster Mechanism

Fig.3 shows a top view of a powered-caster. The original design of the powered-caster is a single wheel type in which normal wheel is off-centered from steering shaft. The wheel shaft and the steering shaft of the powered-caster is driven by independent motors. When only the wheel shaft is rotated by the motor, the caster moves in forward direction which is denoted as \dot{x}_w in Fig.3. When only the steering shaft is rotated by the motor, the mechanism rotates about the point of contact which is also shown in the figure. By this rotational motion, the location of the steering shaft is changed which velocity is \dot{y}_w directing tangential direction of the circle which center is at the point of contact and the radius is s , caster-offset. These velocity vectors are independently controlled and directing right angle for each other. Therefore, to generate a velocity V in the direction θ at the center of the steering shaft, the wheel and the steering shaft rotations, ω_w and ω_s , are derived by the following kinematics.

$$\begin{bmatrix} \omega_w \\ \omega_s \end{bmatrix} = \begin{bmatrix} 1/r & 0 \\ 0 & 1/s \end{bmatrix} \begin{bmatrix} \dot{x}_w \\ \dot{y}_w \end{bmatrix} \quad (1)$$

where $\dot{x}_w = V \cos \theta$, $\dot{y}_w = V \sin \theta$. These components are determined by a function of θ , the orientation of the caster mechanism.

B. Omnidirectional Mobile Robot with Powered-casters

Fig.4 shows a schematic overview of an omnidirectional mobile robot with two powered-casters. The robot with a pair of powered-casters is controlled by four electric motors which involves one redundant DOF in actuation. For this class of omnidirectional robots, the powered-caster provides an active traction force in an arbitrary direction for propelling the robot. To coordinate the multiple powered-casters, motors on a powered-caster are controlled based on the velocity based robot model.

The inverse kinematics of two-wheeled mobile robot is represented as (2).

$$\begin{bmatrix} \dot{x}_a \\ \dot{y}_a \\ \dot{x}_b \\ \dot{y}_b \end{bmatrix} = \begin{bmatrix} 1 & 0 & -\frac{w}{2} \cos \phi_v \\ 0 & 1 & -\frac{w}{2} \sin \phi_v \\ 1 & 0 & \frac{w}{2} \cos \phi_v \\ 0 & 1 & \frac{w}{2} \sin \phi_v \end{bmatrix} \begin{bmatrix} \dot{x}_v \\ \dot{y}_v \\ \dot{\phi}_v \end{bmatrix} \quad (2)$$

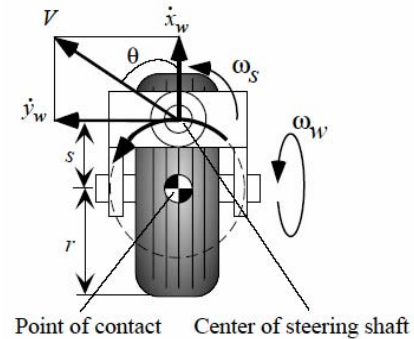


Fig.3 : Velocity control of a powered-caster

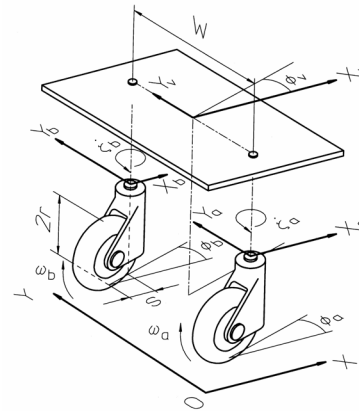


Fig.4 : A two-wheeled omnidirectional robot

IV. 4WD OMNIDIRECTIONAL MOBILE SYSTEM

A. Four-Wheel-Drive Mechanism

A 4WD drive system was invented in 1989 [5] for enhancing the traction and step climbing capability of the differential drive systems which schematic is illustrated in Fig.5. This 4WD mechanism has recently applied to a product design by a Japanese company [6]. The wheelchair equips four wheels, two omni-wheels in front and two normal tires in rear. A normal wheel and an omni-wheel, mounted on the same side of the chair, are interconnected by a chain or a belt transmission to rotate in unison with a drive motor. A common motor is installed to drive normal and omni wheel pair via synchro-drive transmission on each side of the mechanism. Then two motors provide deferent velocity on each side witch presents differential drive motion of 4WD mechanism. Thus all four wheels on 4WD can provide traction forces. Since the center of rotation shifts backward, when it turns about a steady point on the floor, it requires large space when the wheelchair is controlled in a differential drive

manner. The offset distance between drive wheels and a center of a chair makes the maneuverability of the wheelchair worse.

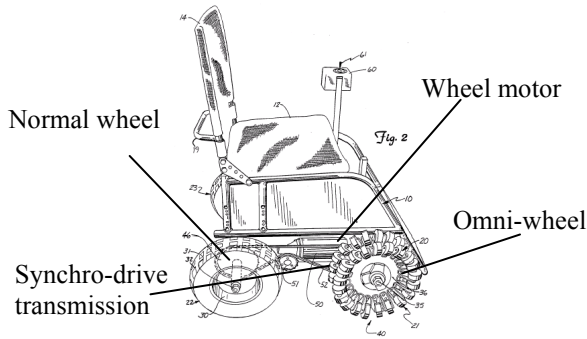


Fig. 5. Original 4WD synchronized transmission

B. Omnidirectional Control of 4WD

In our project, it is a goal to develop an omnidirectional wheelchair with high mobility and maneuverability in a single design which can be used in multiple environments including outdoor and indoor. For omnidirectional motion with a 4WD mechanism, a new type of omnidirectional system is proposed. To enable a wheelchair to move in any direction instantaneously, omnidirectional control method, called "powered-caster control" which was introduced in previous section, is extended and applied to the 4WD mechanism[7]. Fig.6 shows a schematic of the 4WD omnidirectional wheelchair. The wheelchair has two omniwheels in front and standard pneumatic tires in rear which form 4WD configuration. A pair of an omniwheel and a pneumatic tire mounted on the same side of the wheelchair are connected by belt transmission for rotating unison and driven by a common motor which configuration is completely identical to the original 4WD system shown in Fig.5.

In our design, an additional third motor is mounted on the conventional 4WD platform for rotating a chair about the vertical axis which is also illustrated in Fig.4. Those three motors including two wheel motors and the third motor enable the wheelchair to realize independent 3DOF omnidirectional motion by a coordinated motion control[8],[9].

To achieve coordinated control for omnidirectional motion of a chair, the powered-caster omnidirectional control for twin-caster configuration has been applied to the 4WD system. Fig.7 illustrates a schematic top view of a 4WD mechanism. In Fig.7, it is found that rear two drive wheels and center axis form a twin-caster configuration, i.e. parallel two wheels are located on the off-centered position which midpoint is distant from vertical steering axis, which is emphasized by thick lines in the Fig.7 and a vehicle with a twin caster drive mechanism is shown in Fig.8. The powered-caster omnidirectional control enables the caster mechanism to emulate the caster motion by actuating wheel and steering axes.

The powered-caster-based coordinate control of three motors needs a kinematic model of the 4WD. The kinematic model represents the relationships between the motion of the

4WD and the three motor angular velocities of the drive wheels and the chair rotation axis. First, we consider the fundamental motions of a twin-caster drive (TCD). Figure 9a shows the translational motion of the vehicle in which two wheels rotate in same angular velocity to travel in same direction. In this case, TCD travels also straight forward, therefore TCD velocity and its rotation are represented as follows.

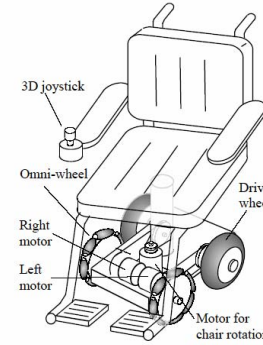


Fig. 6. A 4WD omnidirectional wheelchair

$$\begin{aligned} \dot{x}_v &= \frac{1}{2}(v_R + v_L) = v \\ \dot{\phi}_v &= \frac{1}{W}(v_R - v_L) = 0 \end{aligned} \quad (3)$$

Figure 9b shows another motion in which two wheels are rotated at same angular velocities but in opposite directions resulting in spin of TCD about the midpoint of two wheels. This motion provides only rotation but no translation velocity which is represented as,

$$\begin{aligned} \dot{x}_v &= \frac{1}{2}(v_R + v_L) = 0 \\ \dot{\phi}_v &= \frac{1}{W}(v_R - v_L) = \frac{2v}{W} \end{aligned} \quad (4)$$

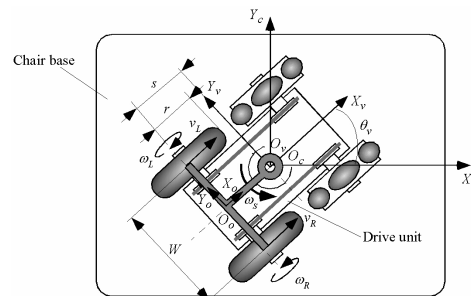


Fig. 7 Omnidirectional vehicle with 4WD mechanism

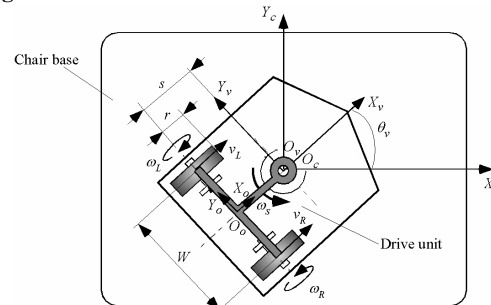
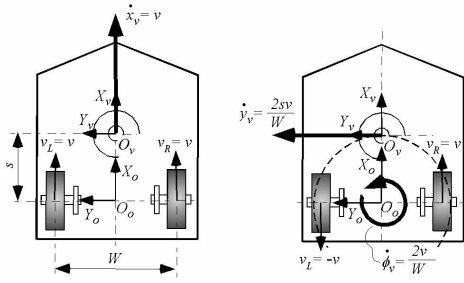


Fig. 8 Omnidirectional vehicle with a twin-caster



(a) Motion in X-direction (b) Motion in Y-direction
Fig. 9 Omnidirectional control for twin-caster drive (TCD)

Now we focus on the motion of the steering center whose location is identical to the rotation center of a chair. When TCD rotates about the midpoint of two wheels, the center of the steering presents a circular motion whose center is at the midpoint and the radius equals the caster offset, s . At each moment, velocity at the center is directing tangential direction of the circle which directs the lateral direction of TCD at all times. The lateral velocity denoted by \dot{y}_v in Fig. 11b is represented by,

$$\dot{y}_v = s\dot{\phi}_v = \frac{s}{W}(v_R - v_L) = \frac{2sv}{W}. \quad (5)$$

The translation velocities \dot{x}_v and \dot{y}_v are directed at right angles to each other. Note here, the rotation of TCD is not independently controlled since the rotation $\dot{\phi}_v$ is determined by creating the lateral velocity \dot{y}_v to satisfy Eq (5). From Eqs. (3)-(5), the relationships between the vehicle translation velocity and wheel velocities are derived as,

$$\begin{bmatrix} \dot{x}_v \\ \dot{y}_v \end{bmatrix} = \begin{bmatrix} 1/2 & 1/2 \\ s/W & -s/W \end{bmatrix} \begin{bmatrix} v_R \\ v_L \end{bmatrix} \quad (6)$$

Thus, translation velocities along the X- and Y-directions are completely determined and independently controlled by wheel velocities. To generate the required velocity vector that directs in an arbitrary direction with arbitrary magnitude, the reference vector is projected in X- and Y-directions of vehicle coordinate system (Fig.7 or 8). The velocity component in each direction, \dot{x}_v or \dot{y}_v , can be independently achieved by using kinematics of TCD in Eq. (6).

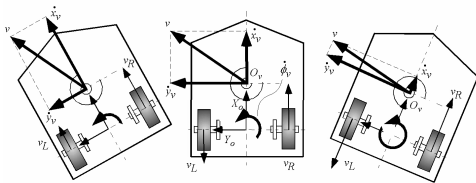


Fig. 10 Projection of a command velocity into vehicle coordinate axes depending on the TCD orientation.

When the reference velocity is steady to the ground, the velocity components in X- and Y-directions vary depending on the TCD orientation relative to the ground. Therefore,

wheel velocities also vary which results in straight motion of the TCD center (see Fig. 10). TCD shows spontaneous flipping behavior during the motion, which is often found in passive casters installed on legs of chairs and tables, etc. It is said the powered-caster control emulates caster motion by actively actuating the wheel axis.

Translation in arbitrary direction is achieved by TCD as presented above. However, orientation of TCD can not be controlled independently. To control 3DOF motion of a chair, the chair rotation axis must be also coordinated. The velocity command is given based on the chair orientation since a joystick is fixed on the chair. Then the command velocity is translated into TCD coordinate by the relative orientation of the chair to the vehicle, θ_v as

$$\begin{aligned} \dot{x}_c &= \dot{x}_v \cos \theta_v - \dot{y}_v \sin \theta_v \\ \dot{y}_c &= \dot{x}_v \sin \theta_v + \dot{y}_v \cos \theta_v \\ \dot{\theta}_c &= \dot{\theta}_v + \omega_s \end{aligned} \quad (7)$$

From Eqs. (6) and (7), an overall kinematic model of the omnidirectional 4WD wheelchair is represented as follows.

$$\begin{pmatrix} \dot{x}_c \\ \dot{y}_c \\ \dot{\theta}_c \end{pmatrix} = \begin{pmatrix} J_{11} & J_{12} & 0 \\ J_{21} & J_{22} & 0 \\ r/W & -r/W & 1 \end{pmatrix} \begin{pmatrix} \omega_R \\ \omega_L \\ \omega_s \end{pmatrix} \quad (8)$$

where,

$$\begin{aligned} J_{11} &= \frac{r \cos \theta_v}{2} - \frac{rs \sin \theta_v}{W} \\ J_{12} &= \frac{r \cos \theta_v}{2} + \frac{rs \sin \theta_v}{W} \\ J_{21} &= \frac{r \sin \theta_v}{2} + \frac{rs \cos \theta_v}{W} \\ J_{22} &= \frac{r \sin \theta_v}{2} - \frac{rs \cos \theta_v}{W} \end{aligned} \quad (9)$$

Where r, W and s are the wheel radius, tread and caster-offset, respectively. A 3×3 matrix in the right side of eq.(8), called as Jacobian, is a function of orientation of the 4WD unit with relative to the chair base, θ_v . All elements in the Jacobian can always be calculated and a determinant of the Jacobian may not be zero for any θ_v . Therefore there is no singular point on the mechanism and an inverse Jacobian always exists. The three motors are controlled to realize a 3DOF angular velocity commands \dot{x}_c , \dot{y}_c and $\dot{\theta}_c$ by independent speed controllers for omnidirectional movements. Thus, holonomic 3DOF motion can be realized by the proposed mechanism.

Fig. 11 shows a one of the simulation results in which an omnidirectional control of the twin-caster mechanism are tested. In the simulation, twin-caster mechanism is controlled to track a straight line with a center of a mechanism locating on the line at all times. During the motion, the orientation of

the mechanism is rapidly flipped over and orient to the direction of motion. This flip motion is often seen on passive casters which installed on the legs of office chairs and tables. Thus the powered-caster control achieves the emulation of caster motions by coordinated control of multiple actuators.

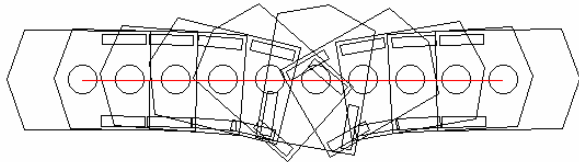


Fig.11: Omnidirectional control for twin-caster mechanism

This class of omnidirectional mobility, so called “holonomic mobility”, is very effective to realize the high maneuverability of wheelchairs by an easy and simple operation.

V. PROTOTYPE DESIGN

Wheelchair specifications for prototype design are shown below. The wheelbase and tread of the 4WD mechanism are 400mm and 535mm respectively. Those dimensions are determined to satisfy the limitation of the standard wheelchair specification for the dimension, 600mm in width and 700mm in length as shown in the spec. The required step height which can be surmounted by the wheelchair is approx. 100mm for accessing to a train car from a station platform with no assistance. The maximum running speed for continuous drive is 6km/h which is same as conventional standard wheelchairs in Japan.

Fig.12 illustrates a 3D drawing of a prototype designed by 3D CAD. Fig.13 shows an overview of the prototype wheelchair.

** Wheelchair Specifications**

Dimension	Width	600mm
	Length	700mm
	Height	450mm
Weight	Total	180kg(human+wheelchair)
	Wheelchair	100kg (including batteries)
Speed		6km/h
Surmountable step		100mm in height

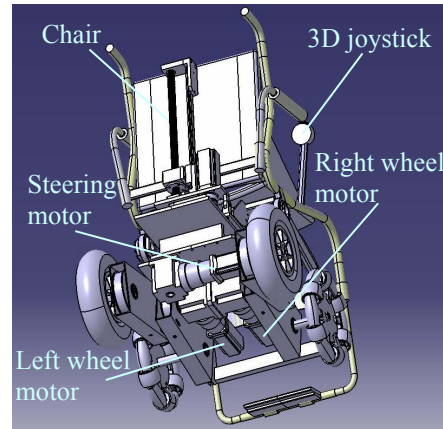


Fig.12. Prototype bottom view by 3D CAD



Fig.13. 4WD omnidirectional wheelchair prototype

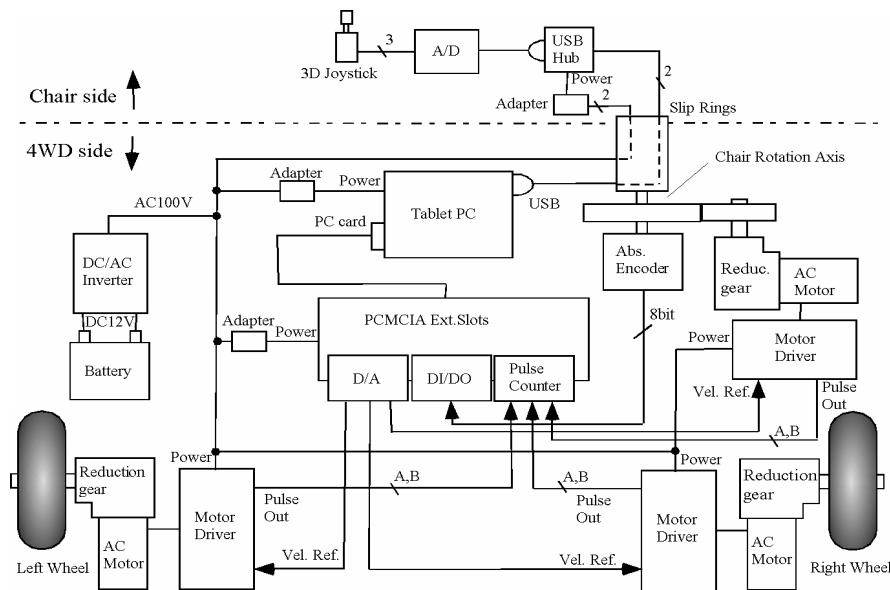


Fig.14 System configuration of the prototype wheelchair

VI. EXPERIMENTS

A. Omnidirectional motion

To verify the omnidirectional mobility of the proposed system, lateral motion was presented by the prototype wheelchair while keeping the chair orientation constant.

A small ball was attached to the chair to indicate the center of the steering axis. A stereo camera system (Quick Mag IV from OKK Inc, Japan) detects the ball location in 3D coordinates. The prototype was controlled by a remote PC via a LAN connection. Thus, a complete linear trajectory in lateral direction was commanded to the prototype. Figure 15 shows a chair motion detected by the stereo camera system. An actual and a reference path are plotted in the figure which closely agree. Figure 16 shows tracking errors between the actual and the reference. The error was suppressed to within ± 5 mm despite the flipping behavior that occurred. The camera system also provided real-time video images with over-writing rectangle window(s) and the path of the target(s) (in this experiment, a small ball). Figure 17(a)-(j) shows a series of video images. The prototype wheelchair moved from the right side of the picture frame to the left. The final picture, Fig. 17(j) shows a straight path which was created by the wheelchair movement. During the motion, the 4WD presented a flipping behavior, Fig. 17(d), (e) and (f), which is also shown in a computer simulation in Fig. 11.

B. Variable center of rotation

The proposed system realizes holonomic and omnidirectional motion of a chair by the coordinated control of three motors. The holonomic mobile capability makes it possible to change the location of a center of rotation at any point to fit to customer requests. In a normal setup, a chair rotates about its center when the operator commands a spin turn by twisting the joystick. However, the location of the center is variable in the control program to any point including the out-of-footprint area of the wheelchair. However, usual requests may be to shift it to the back side to simulate a rear drive wheelchair, or to shift to the front side to simulate a front drive wheelchair. To present the flexibility of the proposed system, two patterns of spin turn motion were performed. Figure 18(a) and (b) shows the final image of each test run for which the stereo camera system was used. The path of the wheelchair are remained in those capture images. In Fig. 18(a), the wheelchair rotated about the front position which was located approx. 500 mm forward of the center of the chair. In Fig. 18(b), the center was shifted also approx. 500 mm towards the rear. From these results, the center of rotation can be customized to an individual.

C. Task example

The holonomic and omnidirectional mobile systems are easy to maneuver because 3D command in X- and Y- directions and rotation are directory commanded and an operator does not have to consider the wheel motions and its configurations.

To demonstrate maneuverability, a task example was performed by the prototype. The task of getting out of a room by pulling the door open is a difficult task for a wheelchair user. A task of pulling the door is relatively more difficult than pushing the door. This task example includes sub tasks such as: 1) approaching to the door to grasp the door knob, 2) moving backward to pull the door open, 3) going through the door and getting out of the room, and 4) driving to another location.

Figure 19(a)-(j) shows screen shots of the experiment. In this test, the prototype wheelchair was operated using a 3D joystick by a human operator who was sitting on the chair. Since the wheelchair has high maneuverability, the task was successfully achieved with no collision with the door or a wall. The operator did not see the 4WD mechanism during the task, however, the 4WD mechanism changed its orientation widely when the operator moved sideways to avoid colliding with the door (Fig. 19(d)-(g)).

Figure 20 shows the 3D commands (X, Y and Rotation) to the wheelchair during the task of Fig.19 which means 3D simultaneous motion was executed for complete the door opening task. Those are found in sub tasks including, 1) approaching the door and 4-1) turning after exiting the room. Individual lateral translation is often used in subtask 3) exiting the room.

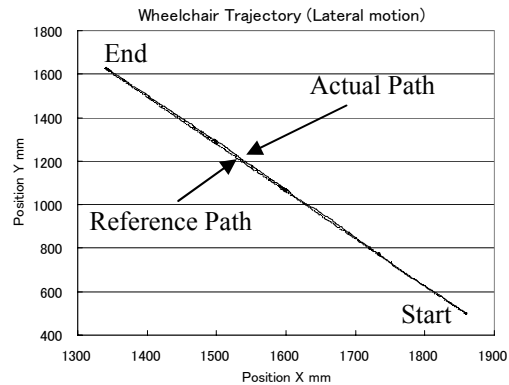


Fig. 15 Reference and actual trajectories of the 4WD wheelchair

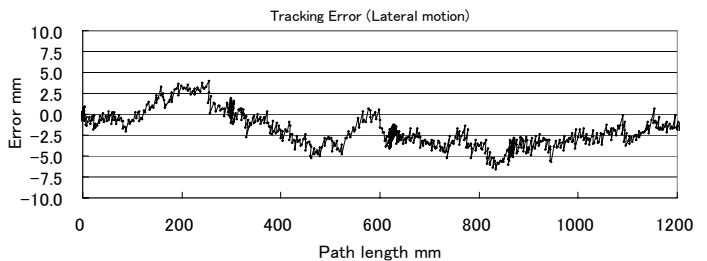


Fig. 16 Tracking error on the experiment using 4WD wheelchair

VII. CONCLUSION

Mechanism and omnidirectional control of a 4WD mechanism for wheelchairs are presented in this paper. The omnidirectional wheelchair system is proposed for improving maneuverability of standard wheelchairs. The 4WD mechanism has high mobility which equips four wheels, two

omni-wheels in the front and two normal tires in the rear, and all wheels provide traction even with two motors to drive these wheels. To realize holonomic and omnidirectional motion of a chair by utilizing the 4WD mechanism, the proposed system includes the third motor to rotate the chair at the center of the 4WD mechanism about the vertical axis.

For omnidirectional control of the 4WD mechanism, powered-caster control has been applied. To achieve a coordinated control of three motors, kinematics of the 4WD wheelchair was analyzed and a kinematic model was derived which represents the relationships between 3DOF wheelchair motion and the rotations of three motors. In the powered-caster control, two wheel motors are coordinated to translate the center of the chair in an arbitrary direction while the chair orientation is controlled by the third motor separately.

The omnidirectional motion was verified by a series of experiments using a wheelchair prototype. First, omnidirectional mobility was tested in which the wheelchair made a lateral motion without changing its orientation. Next, one of a applications of the holonomic mobility was performed in which the center of rotation was varied by a control program to customize per user request for simulating the wheelchair drive types, such as front drive, rear drive, or center drive.

To present the high maneuverability of the proposed omnidirectional mobile system, a task example was performed in which an operator maneuvered the wheelchair by 3D joystick to exit a room with pulling the door open. The task was successfully achieved with no collision with the door or walls. During the task, it was found that the simultaneous 3DOF motions, lateral translation are often commanded as well as the forward translation for pursuing the task.

From these experiments, the omnidirectional and holonomic mobile capability are shown to be very effective and useful for maneuvering in crowded areas and achieving complicated tasks.

ACKNOWLEDGMENT

This project was supported by the Industrial Technology Research Grant Program in 2006 from the New Energy and Industrial Technology Development Organization (NEDO), Japan, research ID 05A06715a.

REFERENCES

- [1] All-direction Power-driven Chair "FJ-UEC-600", Fujian Fortune Jet Mechanical & Electrical Technology Co., Ltd.
- [2] M.Wada and H. H. Asada, "Design and Control of a Variable Footprint Mechanism for Holonomic and Omnidirectional Vehicles and its Application to Wheelchairs," IEEE Trans on Robotics and Automation, Vol.15, No.6, pp978-989, 1999.
- [3] S.Hirose and S.Amano : "The VUTON : High Payload High Efficiency Holonomic Omni-Directional Vehicle," 6th Int. Symp. on Robotics Research, October, 1993.
- [4] M.Wada and S.Mori, " Holonomic and Omnidirectional Vehicle with Conventional Tires," Proceedings of the 1996 IEEE International Conference on Robotics and Automation (ICRA96), pp3671-3676, 1996.
- [5] Jefferey Farnam, "Four-wheel Drive Wheel-chair with Compound Wheels," US patent 4,823,900, 1989.
- [6] "Patrafour" Kanto Automobile Corp.
<http://www.kanto-aw.co.jp/jp/products/wheelchair/>
- [7] M.Wada, A.Takagi and S.Mori, "Caster Drive Mechanisms for Holonomic and Omnidirectional Mobile Platforms with no Over Constraint," Proceedings of the 2000 IEEE International Conference on Robotics and Automation (ICRA2000), pp1531 -1538, 2000.
- [8] Masayoshi Wada, Omnidirectional and Holonomic Mobile Platform with Four-Wheel-Drive Mechanism for Wheelchairs, JSME Journal of Robotics and Mechatronics, Vol.19, No.3, pp264-271, 2007.
- [9] Masayoshi Wada, " Holonomic and Omnidirectional Wheelchairs with synchronized 4WD Mechanism," Proceedings of the 2007 IEEE/RSJ International Conference on Intelligent Robots and Systems (IROS2007) pp.1196-1202, Dec 2007.

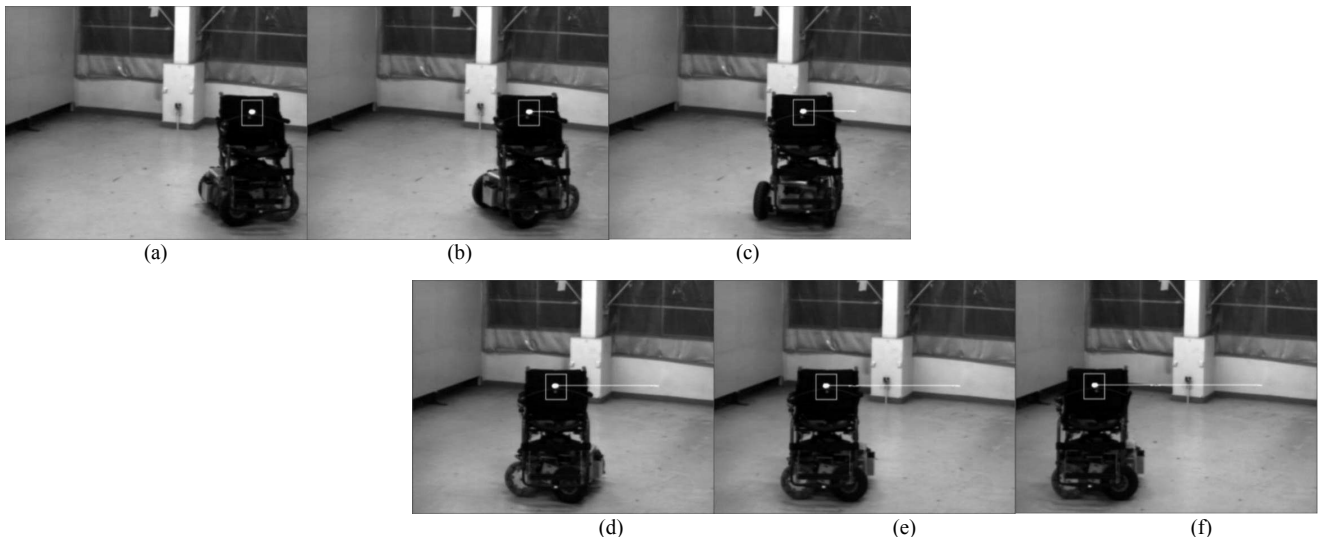


Fig. 17. An example of omnidirectional motion 1: the lateral motion of the wheelchair prototype; it moves in sideways from the right side to the left of the picture frames while maintaining the chair orientation to be stable.



(a): Spin turn about the front position



(b): Spin turn about the back position

Fig. 18 Variable center of rotation

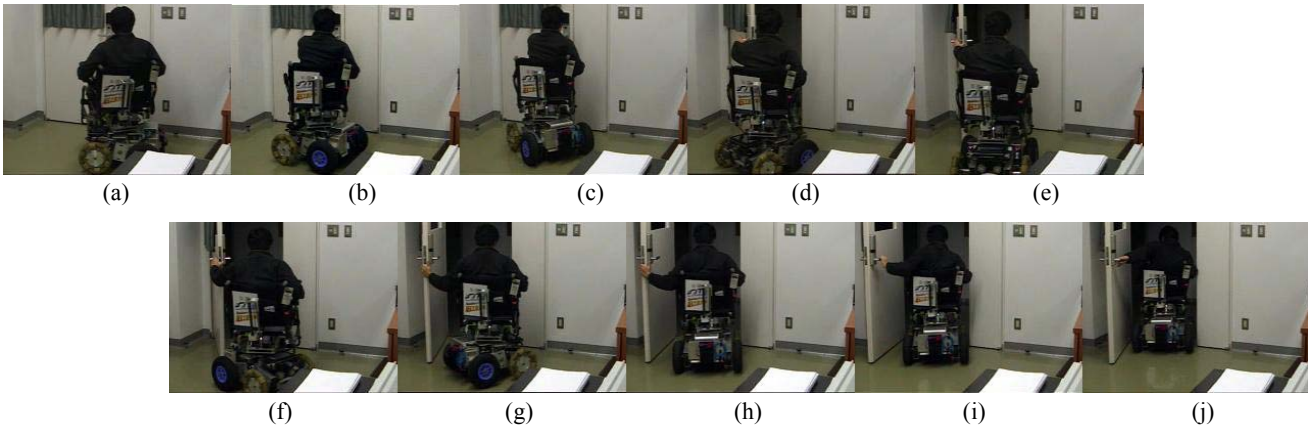


Fig.19: An example of tasks using an electric wheelchair: Getting out of a room with pulling a door open.

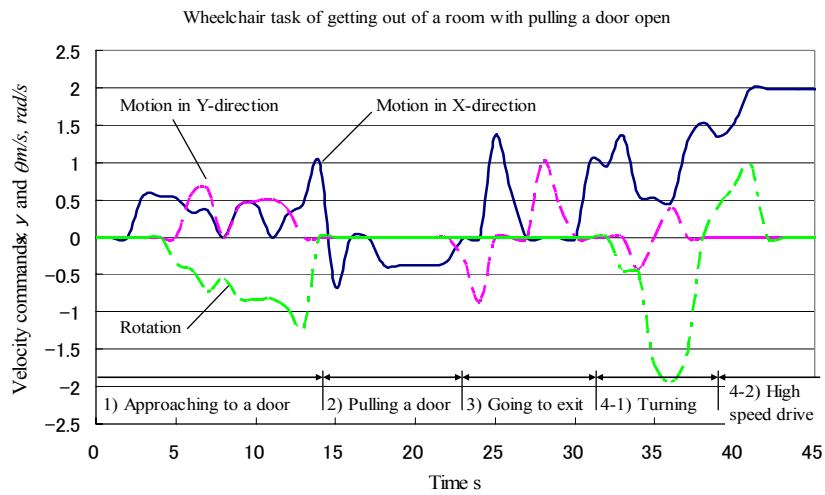


Fig. 20 3DMotion of wheelchair presenting a door opening task for exiting a room